

# Putty, SSH Client

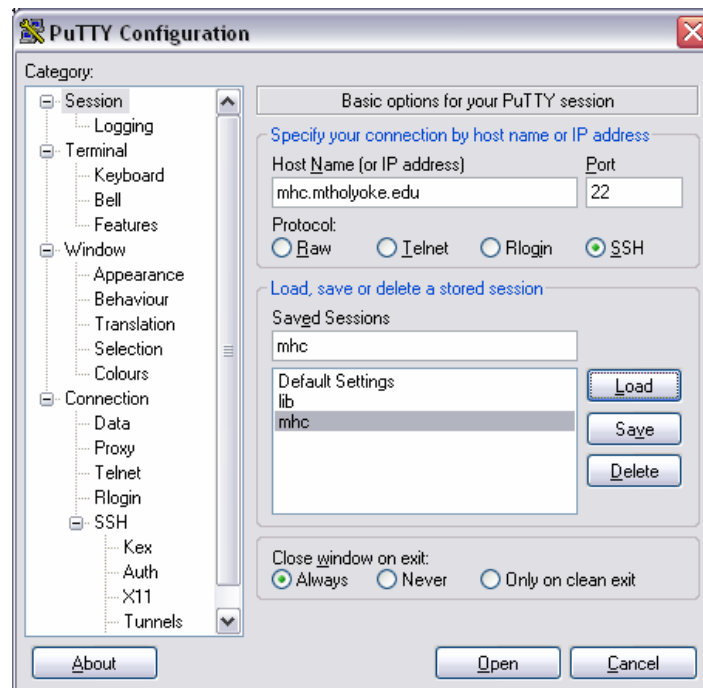
These are Off-campus instructions. There are on-campus instructions here:  
<http://www.mtholyoke.edu/lits/tsr/tiwelcome.shtml>

Related Sites:

<http://www.puttyssh.org/>  
<http://www.puttyssh.org/download.html>

- Download the installer from <http://www.puttyssh.org/latest/x86/putty.exe>
- Select to SAVE the installer if prompted, and choose “desktop” as the location
- Double-click the file that just was saved to your desktop
- In the window that appears, enter the following information:

**Host Name: mhc.mtholyoke.edu**  
**Protocol = SSH**  
**Port should say 22**



- In the field that says “Saved Sessions”, give this connection the name MHC (or set as default by highlighting “Default session”), and then click the save button
- Click the Open button to start and launch your session

In the future, when launching the program you may highlight MHC, click the load button, and then the open button, or simply double-click the MHC name within the list.

This program should be able to connect to the MHC server from any location, as long as you assure that an internet connection has been established first.

Note: This icon on your desktop IS the actual application, not a shortcut. If desired, you can move the icon to the “Program Files” directory on the hard drive and create a shortcut to it.

For further assistance, please call the Call Center at 413-538-2600.